

Vital

The Vital electric unit is independent of heating water supply. All that is required for its connection is an electric socket. A vertical design combined with a large surface will provide heat to hallways, living rooms, vestibules and any other areas where no other heating options are available.

Material	steel pipes Ø 28 mm steel profiles 70×50 mm steel profiles 70×11 mm
Max. operating temperature	70 °C
Number of profiles	4, 6, 8

Z heating rod without a regulator



Mini PW



Whistle



Stone



1. Vital - Cinnamon S35 [29] with regulator Whistle / 2. Vital - Snow white RAL 9016 [01] with regulator Stone + printed motif P35

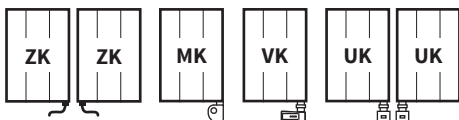
Custom-Made Radiator

Modification options	Vital
Surface treatment	colour
Height range [mm]	NO
Length range [mm]	NO
Combined/electric version	NO/STANDARD
Middle connection (SM)	NO
Side connection (SB)	NO
One-sided into space fixing	NO

Accessories

- Electric regulators page 74
- Colour ref. chart page 82
- Bath. accessories page 70

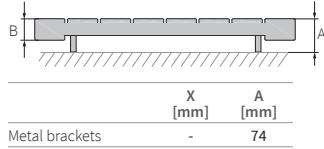
Connection Options



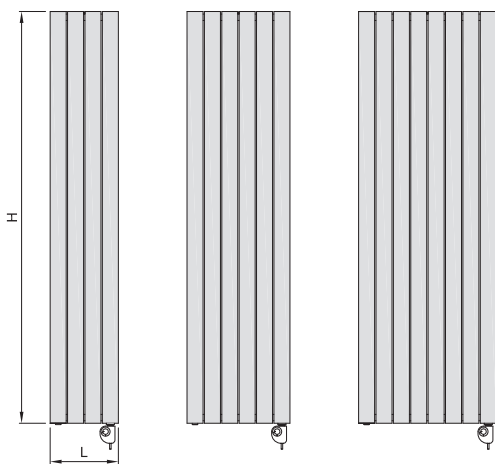
The type of connection must be specified in the order; for more information see page 83, positions 13 and 14.

Type Height (H) [mm] Length (L) [mm]	Depth (B)	Weight	Water capacity	Temperature exponent	Output 75/65/20°C	Power input Z heat. rod, Mini PW, Whistle, Stone	Power input KTX 3	Connection span (Z)	Electric	Own design - printed motif
Code	[mm]	[kg]	[l]	[-]	[W]	[W]	[W]	[mm]		
DVIT 1800 0298	50	25,4	-	-	-	800	-	-	✓	✓
DVIT 1800 0450	50	38,0	-	-	-	1 000	-	-	✓	✓
DVIT 1800 0602	50	50,7	-	-	-	1 200	-	-	✓	✓

See page 83 for ordering procedure / The weight given does include the liquid, but does not include packaging. / This model is not compatible with the KTX 3 regulator.



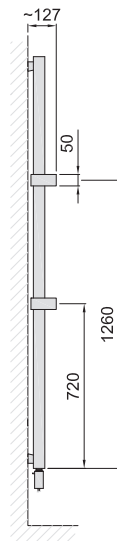
Type height (H) / length (L) [mm]



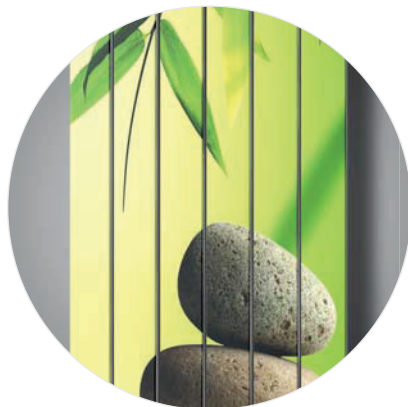
H: 1800
L: 0298

H: 1800
L: 0450

H: 1800
L: 0602



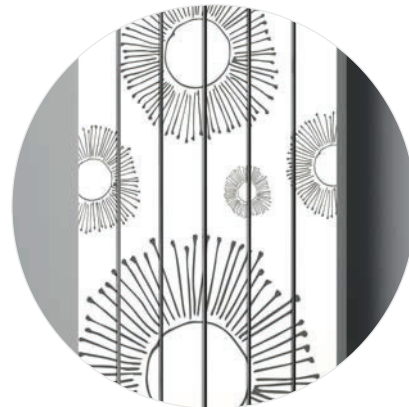
Option of adding
up to 2 rails



Full-surface motif printing

The print will cover 100% of the radiator surface.
Applicable to a white background only - RAL 9016.
The profile and unit sides remain white - RAL 9016.

Vital - Bamboo P33



Partial motif printing

In partial printing, the background of the motif is visible.
The background can be in any smooth colour selected
from the RAL or ISAN colour chart (no structured colours).
The colour of the unit sides is always identical with the
base colour. The motif size and colour design will be
adjusted based on the unit specifications.

Vital - Snow white RAL 9016 [01] + print S02 Anthracit [61]